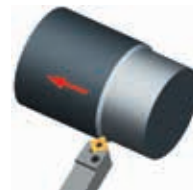
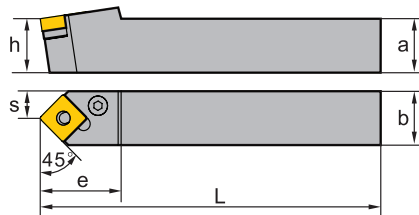
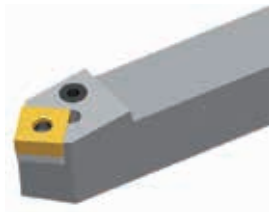


SN** holder (external) P-Clamping

PSDNN Kr: 45°



Article	*	Stock	Dimensions [mm]						Inserts
			a	b	L	h	s	e	
PSDNN1212F09		○	12	12	80	12	6	21	SN**0903**
PSDNN1616H09		●	16	16	100	16	8	23	SN**0903**
PSDNN2020K12		●	20	20	125	20	10	30	SN**1204**
PSDNN2525M12		●	20	20	150	20	12.5	30	SN**1204**
PSDNN3232P12		●	32	32	170	32	16	40	SN**1204**
PSDNN2525M15		●	25	25	150	25	12.5	40	SN**1506**
PSDNN3232P15		●	32	32	170	32	16	40	SN**1506**
PSDNN3232P19		●	32	32	170	32	16	40	SN**1906**
PSDNN4040S19		●	40	40	250	40	20	40	SN**1906**

● Ex stock ○ On demand

* With internal cooling

Spare parts						
	Insert	SN**0903**	SN**0903**	SN**1204**	SN**1506**	SN**1906**
	h	12	16	20-32	25-32	32-40
	Knee lever	L3B	L3	L3	L5	L6
	Screw				LEM8×25	LEM10×27
	Screw	LEM5×12B				
	Screw		LEM6×13.4A	LEM6×13.4A		
	Shim		S09AP	S09AP	S15AP	S19AP
	Shim pin (shim)		SP10	SP10	SP5	SP6
	Wrench	WH20L	WH25L	WH25L	WH30L	WH40L

Insert				
Finishing	Medium Cut	Roughing	Cast Iron	PCBN/PCD
A62	A64	A67	A73	A148

System code > A194

Grade selection > A38

Technical info > A445

Cutting data > A324