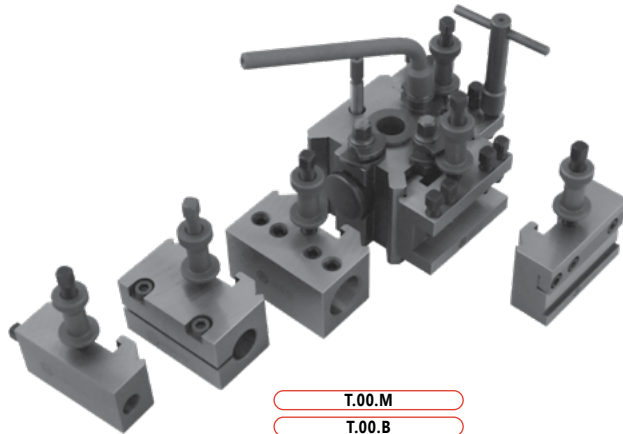


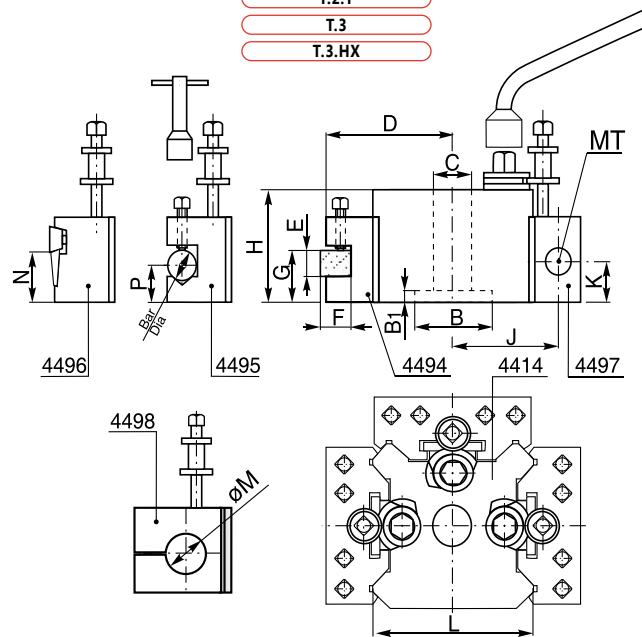
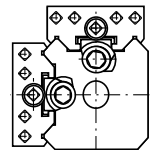
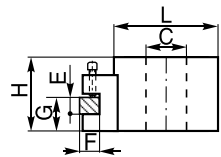
**4414**

- Schnellwechsel-Stahlhalter
- Quick change toolposts



T.00.M  
T.00.B  
T.0

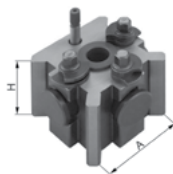
T.1  
T.1.X  
T.2  
T.2.T  
T.3  
T.3.HX



Größe Size	H	B	B <sub>1</sub>	C	D	E	F	G max.	G min.	Bar Dia	P max.	P min.	MK MT	J	K max.	K min.	L	N	M
								G max.	G min.		P max.	P min.			K max.	K min.			
T.00.M	37,0	—	—	11,2	50,0	12	11,0	27,0	17,0	11,0	22,5	12,5	—	—	—	—	58,0	16,0	—
T.00.B	42,0	—	—	16,0	50,0	12	11,0	32,0	17,0	11,0	27,5	12,5	—	—	—	—	58,0	16,0	—
T.0	51,0	22,22	12,5	19,0	62,0	16	13,0	36,5	20,5	16,0	32,0	16,0	1	52,5	28,5	16,0	73,0	27,0	19,0
T.1	63,5	31,75	8,5	19,0	62,0	20	13,0	46,0	30,0	16,0	44,5	25,5	1	52,5	41,0	22,0	73,0	27,0	19,0
T.1.X	73,0	31,75	8,5	19,0	62,0	20	13,0	57,0	35,0	16,0	54,0	32,0	1&2	52,5	51,0	28,5	73,0	27,0	19,0
T.2	71,5	44,45	9,5	25,5	74,5	20	19,0	52,5	36,5	19,0	46,0	24,0	2	65,0	47,5	27,0	97,0	33,5	25,4
T.2.T	76,0	44,45	9,5	25,5	84,0	25	25,5	58,5	39,5	19,0	50,0	24,0	2	70,0	51,0	27,0	106,0	33,5	25,4
T.3	95,5	50,80	11,5	25,5	101,5	32	25,5	74,5	51,0	25,5	51,0	28,5	3	85,5	58,2	36,5	125,5	39,5	38,0
T.3.HX	108,0	50,80	11,5	25,5	101,5	32	25,5	84,0	62,0	25,5	65,0	41,0	3	85,5	58,2	36,5	125,5	39,5	38,0

## 4414

- Schnellwechsel-Stahlhalter
- Quick change toolposts



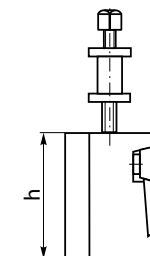
Artikel Nr. Code No.	Typ Type	A x H	Spannbereich Clamping range
800000651	T.00.M	48 x 37	bis zu/ up to 89 mm
800000652	T.00.B	48 x 42	bis zu/ up to 89 mm
800000653	T.0	62 x 51	bis zu/ up to 114 mm
800000654	T.1	62 x 63	114 mm bis/ up to 127 mm
800000655	T.1.X	62 x 73	114 mm bis/ up to 127 mm
800000656	T.2	82 x 71	127 mm bis/ up to 203 mm
800000657	T.2.T	82 x 76	127 mm bis/ up to 203 mm
800000658	T.3	100 x 92	203 mm bis/ up to 292 mm
800000659	T.3.HX	100 x 108	203 mm bis/ up to 292 mm

## 4496

- Standard Schnellwechseleinsatz
- Part off toolholders



Artikel Nr. Code No.	Grösse Size	Für Typ For Type	b x h
800000674	48	T.00M, T.00B	58 x 32
800000676	62	T.0,T.1, T.1X	73 x 47,5
800000677	82	T.2, T.2T	98,5 x 57
800000678	100	T.3, T3HX	124 x 70

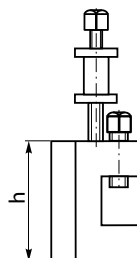


## 4494

- Standard Schnellwechseleinsatz
- Standard toolholders



Artikel Nr. Code No.	Grösse Size	Für Typ For Type	b x h
800000660	48	T.00M, T.00B	58 x 27
800000663	62N	T.0	73 x 35
800000662	62	T.1, T.1X	73 x 44
800000665	82N	T.2	98,5 x 50
800000664	82	T.2T	98,5 x 57
800000666	100	T.3, T.3HX	124 x 70

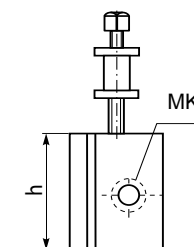


## 4497

- Schnellwechseleinsatz für Werkzeugzeuge mit MK-Schaft
- Morse taper toolholders



Artikel Nr. Code No.	Grösse Size	Für Typ For Type	MK MT
800000680	62/1N	T.0	1
800000679	62/1	T.1, T.1X	1
800000681	62/2	T.1, T.1X	2
800000682	82/2	T.2, T.2T	2
800000683	100/3	T.3, T3HX	3

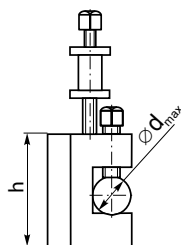


## 4495

- Schnellwechseleinsatz mit Prisma für runde Werkzeugzeuge
- Vee type toolholders



Artikel Nr. Code No.	Grösse Size	Für Typ For Type	Ø <sub>d</sub> <sub>max</sub>	b x h
800000667	48	T.00M, T.00B	11,0	58 x 27
800000670	62N	T.0	16,0	73 x 35
800000669	62	T.1, T.1X	16,0	73 x 44
800000672	82N	T.2	19,0	98,5 x 50
800000671	82	T.2T	19,0	98,5 x 57
800000673	100	T.3, 3HX	25,5	124 x 70

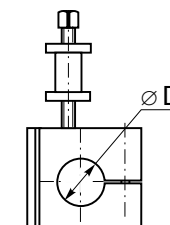


## 4498

- Schnellwechseleinsatz für Bohrstangenhalter
- Toolholders for boring bars



Artikel Nr. Code No.	Grösse Size	Für Typ For Type	ØD
800000684	62	T.0,T.1, T.1X	19
800000685	82	T.2, T.2T	25,4
800000687	100	T.3, T3HX	38

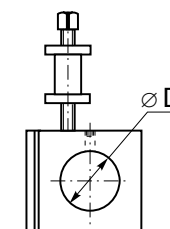


## 4499

- Schnellwechseleinsatz für Bohrstangenhalter
- Toolholders for boring bars



Artikel Nr. Code No.	Grösse Size	Für Typ For Type	ØD
800000688	62	T.0,T.1, T.1X	25
800000689	82	T.2, T.2T	32
800000690	100	T.3, T3HX	40



1

2

3

4

5

6

4499

4498

4497

4496

4495

4494

4414